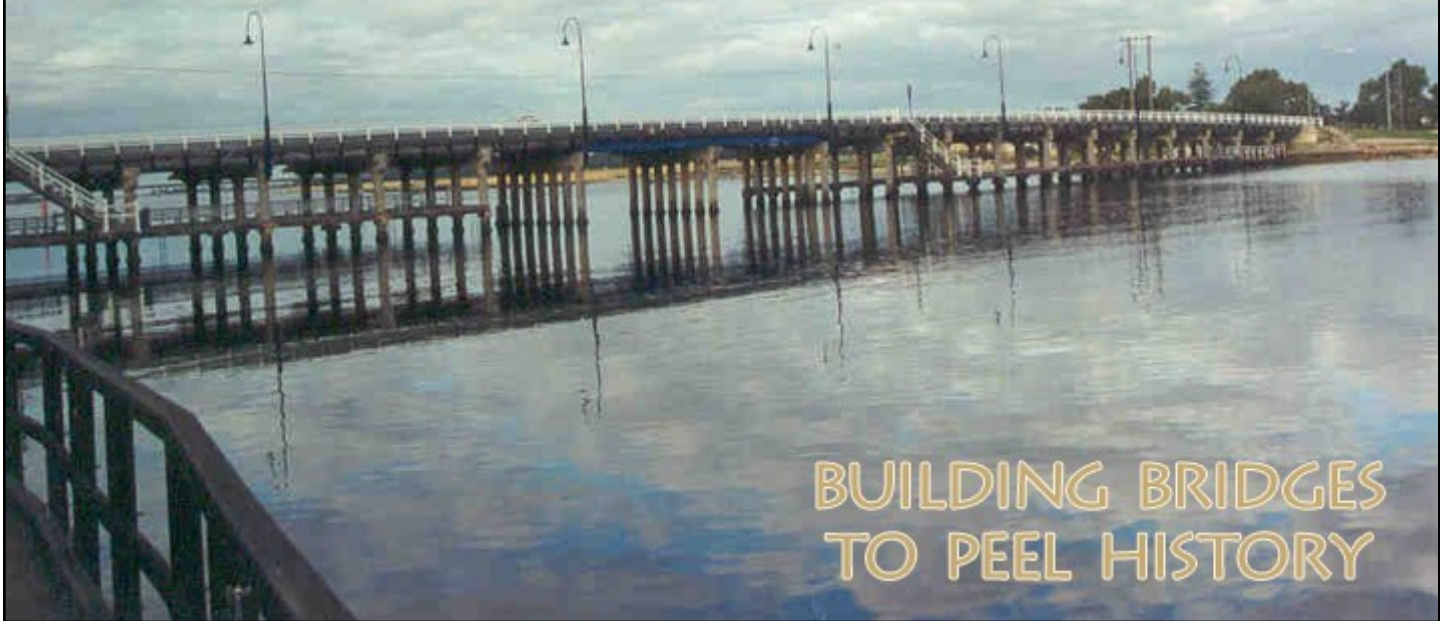


Friends of MANDURAH COMMUNITY MUSEUM



Friends of Mandurah Community Museum Newsletter.

August 2011.

Carinya (Wearne) House.

Charles Wearne purchased the land for Carinya from Ellen Cooper who had lived with her husband James in a little cottage there. It is believed that this property once had Magistrate Murray's house built on it. Later over subsequent periods Charlie also acquired several other blocks adjoining Ellen's land. The land the home was built on ran down to Soldier's Cove near the bridge leading further south.

Wearne House as it is now known, was designed by Allan & Nicholas architects in Fremantle to specific requests by Charlie, included was to be deep sewerage, water to bedrooms and a veranda circling the house, Jack Bovell was engaged to complete this work. This engagement was to prove significant for Bovell as he went on to build a further cottage for caretakers, boat shed and jetty. Following that he was engaged to build Bonnie Doon for Theo and also the corner shop for Violet Sutton.

Charlie and Sue first spent time in Wearne House early in 1927, and they appear to have spent some time during the WA Centenary Celebrations (100th anniversary) as Charlie was a patron of the Murray Districts Centenary Committee. Also as a Patron of the local Progress Association Charlie organised a busy bee to open the bar, and purchased a scoop to assist with this.

A donation of Wearne House is recorded to have come from Mrs Q Angus to the Anglican Church. As Charlie had transferred the property to Walter in 1940 it is unclear why this donation came from Connie and not from Walter.

Special features

Carinya (Wearne House)

Jan Baker.

Photo pages.

Charles Wearne & family.

Wearne House.

Selamat

Regular features.

From the MDO . Nicholas Reynolds.

Education Matters

Chairpersons report – AGM in September.

Take another look at our collection.

* Irons Gary Henchie.

Now hear this!

* Charles Wearne and his boat Selamat during the war.

Neil Morfitt.

John Layton.

What's in a name. Dudley Park area.

(Jan Baker with assistance from Sandy Tuckey)

Search the Web. Trove—National Library of Australia.

Editor.

Jan Baker.

Information relating to the Wearne Brothers is primarily compiled from:-

“Wheels Across Malaysia - A history of the Wearne Brothers” by Christopher Fyfe.

Further information is available in the Local Studies collection of Mandurah Community Museum.

Now Hear This!

Charles Wearne & his boat Selamat during the war.

.....they had a quite a large launch... it was built over there and I think it was built of teak. It was a double ender a whaler, and they used to go out on... when the islands fell they used to do a patrol for some months up between Mandurah and past the Bouvard trying to... well their idea was if anyone had escaped from the islands and they'd got off course or anything and landed on the beach then they could... well they'd pick them up or knew where they were because there was nothing on the beach. I mean not like (laugh) it is now. I mean you had Mandurah and then you had nothing there then you had Bunbury sort of thing as far as a town was concerned on the beach. But it would have been difficult landing there to have to know where exactly where they were I suppose for one thing.

They used to go out early in the morning and they'd do their patrol and they'd come in oh, just after lunch, round about lunch time they'd come in. But you'd see them coming in there and they'd come under... as they come under... to get under the bridge they had a... they'd have to drop their mast down because any of the boats that were up the, what you call Soldiers Cove, it was always just known as the Mill Creek at most times, it used to be known as. They'd have to drop their mast to be able to get under the bridge, the big ones.

And they'd come in there and they'd be all dressed in their white duck... white naval type... he'd have... Mr Wearne himself well he'd have his naval cap on there. He looked real part there coming in. We'd often see them coming in with big... I don't know the proper name of the boat, I think it had some Malaysian name, but it had a big "M1" on it, written on the side of it and I think they may have, well for doing a job like that I think they must have had been allowed petrol and that to run it, because otherwise they wouldn't have had enough petrol to be able to do it. So that was that lot. **Neil Morfitt Oral History.**

Regarding the Selamat.

..... Well they sailed that (Selamat) out of Singapore, when the Japs bombed it. He had as many people as he could fit on board and he sailed that to Darwin. Yes, he sailed it to Darwin and then he sailed it on down to Mandurah here, and it was always moored behind Wearne House which is now a old people's home. But he was a lovely chap, old Charlie, I can still picture him with his pipe and I remember just before he died he came up to Dad, he used to call Dad 'Di', he said "Di, I've come up to see you," and Dad said "What for, Charlie?", "To say Goodbye", and Dad said "Why? Are you going?" He said "No, I'm going to die soon." And Dad said "Don't talk like that", and it was only about a week and he was gone. Yeh, I'll never forget that, old Charlie, dear old chap. Lovely man. **John Layton Oral History.**



Photo from John Layton collection.

What's in a name? Dudley Park area.

Dudley Park area was owned by Roy Tuckey, originally it was farm land largely covered in thorn bush. There really wasn't a name for it the family just called it "The Paddock", Roy had purchased the land from an Irishman for one shilling and sixpence per acre. In the area near Coolibah Street there was one of two windmills on the farm. Roy Tuckey was a descendant of the Tuckey family one of the first pioneers of Mandurah, Roy was involved in farming, business, boating and later in transport.

The area of Dudley Park was specifically named after Dudley, the eldest son of Roy Tuckey. A much respected Freeman of the City of Mandurah, Dudley spent all his life involved in many organisations within the Mandurah area, serving also as a Councillor, Deputy Mayor etc., over a time spanning the 1950s to the 1990s.

Kookerbrook Farm which was Roy Tuckey's farm in Meelon Siding was named for the many kookaburras on it, it went to the waterline and past Long Island to Wanjeep in Coodanup.

Roy Tuckey named streets for his family, mainly grandchildren, Leigh Street which commences the development was a daughter of Barbara who married Bill **McLarty** so there was a McLarty Street, this also celebrated Sir Ross McLarty a member for this area and eventually premier of Western Australia. Also remembered for the McLarty connection was **Blythewood**.

Other members of Roy Tuckey's family include Vance, Geoffrey, Caron, David Vance and Norma.

Within this development there are several streets named after Roy Tuckey's family boats or boats known to Mandurah, these include Goomarl*, Gillark*, and others. We know that the Balranald was a steamship calling regularly to Fremantle in the 1920s & 1930s.

Roy was also particularly interested in both the planets and stars, not surprising given his shipping background and within this development we find, Comet, Planet.....

Of note another place named for a Tuckey boat was the Son Toy Ballroom which opened in the early 1950s. This building still remains within the Tuckey family today.

Jan Baker.

* (Prepared with the assistance of Sandy Tuckey.)

Can you help me? I need artefacts and materials that can be used for teaching purposes, to be loaned to schools. Can you help me? I have had a request for a clothing education kit, in the style of the early 1900s for students to wear. Do you have any clothing of this style that would fit a child?
Katrina

Visitors' Comments.

Fun, Family, Winters Day Excursion.

The Museum is constantly changing displays, exhibitions and also adding to our information by way of display labels and other attractions.

If you haven't been in for some months or years, come and see how we have changed!

Museum Development Officer's Report.

The visitor figures for the 2010/11 financial year are in and the total was 5,308. Needless to say, this is an all-time record for any 12 month period and comes off the back of increased publicity; increased school visits, and increased public programming. June's figures were a record at 383 for the month. All of us who are involved with the Museum can congratulate ourselves at the combined effort which has made this possible.

We have submitted an application in the 2011 round of the Lotterywest interpretation of cultural heritage grants for an innovative form of display which will be able to tell the story of Lake Clifton and its unique thrombolites to a wider audience. The display will use an inflatable dome with a panoramic video outlining the history of the lake from primordial times to the present day. The idea behind a display like this to promote community awareness of the environmental threats to the Lake Clifton ecosystem. Because of the lack of knowledge locally and state-wide about the significance of the thrombolites there is a need to remedy this and for more people to appreciate the natural wonder that is 'on our doorstep'. Scientific interest in the thrombolite communities has been present since the 1970s and naturalists have been very much aware of their significance. The difficulty has been in engaging the general public at large and the community living in the lake Clifton area specifically about this significance. In more recent times artists have begun to pick up on the physical beauty, spiritual and cultural history of the lake from its smallest microbial dwellers in the benthic environment on the bottom through to human uses of the land in the later 19th century. This steadily increasing professional interest in the lake and its cultural heritage comes at a time when both this history and the environment of the lake are coming under increasing threat. From urban encroachment to commercial sand mining operations the lake and specifically the thrombolites are under ever increasing pressure. The City of Mandurah has expressed its desire to educate the local community about the threats to the lake and give them the ability to make informed decisions about the future direction they wish the council to take in terms of preservation and land management in the area. While informed community members are active in this regard, the majority are not. The need and desire to change this has been a major reason behind this project.

Nicholas Reynolds



Above: Lake Clifton's Thrombolites, rare communities of rock-forming microbes, some of the oldest living creatures on earth.

Take another look at your Museum. Irons

Ironing was done using hot coals in open metal pans in China, as long as one thousand years ago.



Blacksmiths started forging simple flat irons in the late middle ages. Plain metal irons were heated by a fire or on a stove. They were made of stone, earthenware and terracotta and were used from the Middle East, to France and the Netherlands. Flat irons were also called sad irons or smoothing irons. Some irons had cool wooden handles, and in 1870 a detachable wooden handle was patented in the U.S.A.

The charcoal iron had an interior which could be filled with smouldering coals. In addition to being rather smoky, it was difficult to get a sufficient draft to keep the coals burning. For this reason, they were equipped with high, spout-like openings, so that the coals could be fanned by inserting a bellows, or by swinging the iron back and forth vigorously. In the late 1800s, other types of self-heating

irons were developed that used gasoline and alcohol as fuel, which was stored in small metal tanks at the back of the iron.



On June 6, 1882, Henry Seely patented the electric iron. At the time, it was called the "electric flatiron". Early electric irons used a carbon arc to create heat, however this was not considered a safe method. In 1892, hand irons using electrical resistance were introduced by Crompton and Co. and the General Electric Company. Electric steam irons were introduced during the early 1950s.



Gary Henchie

Dalrymple School repairs. Remedial work has been completed on the external brickwork of the 1900 Dalrymple School. The initial work included inspection and replacement of worn bricks and removal of cement patches which have been placed on damaged bricks in the past. Cement eats away at the old mortar exacerbating the original damage that the cement was used to repair. One result of this has been the exposure of damage to the schoolroom caused by a dynamite attack when the building was being used as a police station. I have to say that now I've seen just how deep the three holes in the wall are it's more convincing that it was three sticks of dynamite that did the damage. The holes have been resealed with lime plaster which will contrast with the red bricks and allow us to interpret this rich piece of the building's later history.

The work has also seen the chimney stabilised, its flashing replaced and missing bricks reinstated. The gap where the air conditioner was has been bricked in again with matching recycled bricks and the inside plastered. Another move which has made the building look more appealing is the replacement of the metal grate over the window on the south wall with less obtrusive security mesh.

Nick Reynolds.



Pictured left. Magistrate Murray's House.

It is believed this house was used by Magistrate Murray when he visited Mandurah. The house was purchased by James Cooper and they demolished this building to build a cottage on the land. After the death of James the property was owned by his wife Ellen (daughter of James Tuckey).

Charles Wearne purchased the block of land from his aunt Ellen Cooper in 1921, and purchased further blocks around it.

Built on the land was Wearne House pictured below. (see main article this newsletter).

Pictured right. Charles Frederick Foster Wearne. Charlie.

Born in the Victorian goldfields, September 1873, Charlie was the 7th child of John and Matilda Wearne. Matilda was a daughter of James Tuckey from Mandurah. The family moved to WA shortly before the birth of their last child Theo, who was born in Mandurah.

Charlie went to Grammar School in Fremantle, then at the age of 15 commenced an engineering apprenticeship in Singapore where he boarded with his older sister Ellen.

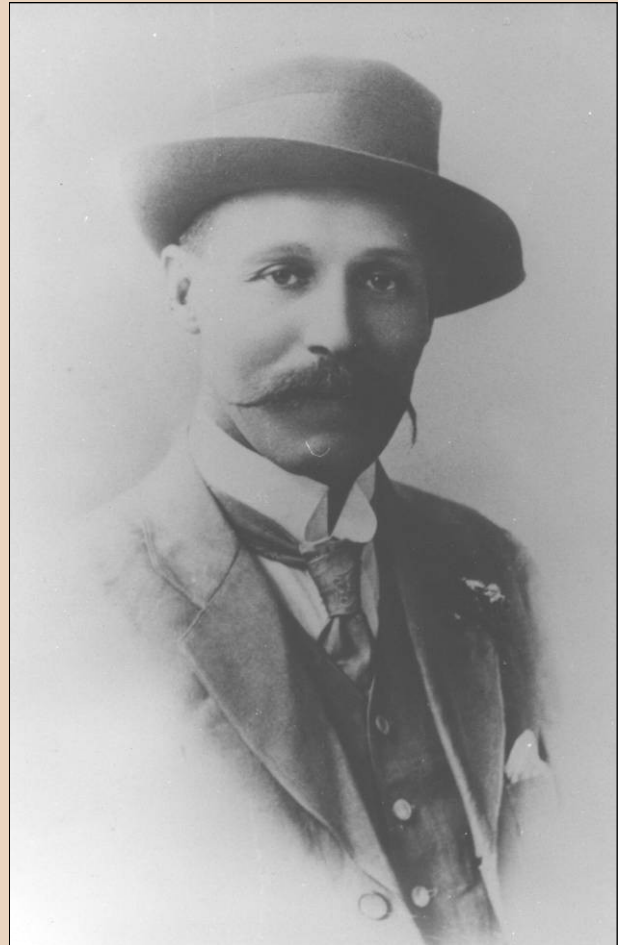
By 1898 Charlie was working as a 2nd Engineer on a dredger in Fremantle Harbour and later worked in Albany, by then a first engineer. In 1905, Charlie now married with 3 children returns to Singapore and becomes co-founder of CFF Wearne selling and repairing cars. This company was to grow to become a major entity within the Singapore and world business environment and continues to trade today as WBL Corporation.

Charlie married Sue Easton and they had three children, Walter, Foster and Constance. The couple retained strong links to Mandurah and their charitable works both within Mandurah and the wider community are well known.

Escaping Singapore, just as the island was invaded by the Japanese, both Charlie and Theo arrived back at Fremantle in February 1942 on the *Gorgon*.

From mid- 1942 until his death, Charlie who became a volunteer in the Naval Auxiliary Patrol and in his yacht *Selamat*, patrolled the waters from Bouvard to the *James Service* reef. During this time he was effective in rescuing several people who had sailed out of the Mandurah estuary.

In late July while continuing his patrols he 'caught a chill' which progressed to pneumonia and was attended by Dr Whelan.





The **Selamat** was built in Singapore and shipped to Fremantle, from here Charlie Wearne sailed it to Mandurah.

Purpose built of Teak and Greenheart to resist borers, it had a shallow draft with special precautions to provide for safe sailing of such a designed vessel. The shallow draft was due to Charlie's knowledge of Mandurah Bar. A dinghy was provided and was named **Selamat Too**.

During the latter part of World War Two, Charles Wearne joined the Volunteer Naval Patrol, and **Selamat** was numbered M1.

After the death of Charles Wearne, **Selamat** was offered for sale by tender in 1947.

Selamat, in Malay, has several meanings. Included are Peace or Safety, rather apt for a small boat.



Pictured, Charles and Selina Susannah Wearne with Walter, Foster and Constance.

Sue Wearne was daughter of Walter and Susannah Easton who arrived in WA on the *Lochnagar* in 1858. Growing up in Fremantle on Walter's vineyard, she went to a convent school in Fremantle. Sue inherited several blocks of land in Fremantle. The couple first lived in Fremantle then Albany when they first married while Charlie was employed firstly as second engineer and worked his way up to engineer.

Constance (Connie) was to marry Quinton Angus and records show that Mrs Q Angus donated Wearne House to the Anglican Church. It is not clear how the house came into her possession as initially it had been signed over to Walter.

Walter joined Wearne Brothers Ltd following schooling at Guildford Grammar, partial university at UWA and later practical experience in England. Eventually he was to become the Managing Director after Theo stepped down in 1955.

Foster also joined the company after schooling at Guildford Grammar and accountancy studies. Foster was to be Company Secretary for many years, eventually becoming Joint General Manager, the same year as Theo stepped down.

As well as many company employees, both Walter and Foster were interned immediately following the Japanese invasion of Singapore. Walter was to be sent to the Burma Railway and Foster was interned in Changi Prison. Both brothers returned to Singapore following the war and were part of rebuilding a successful company which continues to trade today under the name of WBL limited.

Education Matters

On Wednesday 3rd August, I attended a Symposium Public Programmes day at the WA Museum. It was very interesting and relevant to my role as Education Officer. Presenters from other museums spoke about how they engage children and implement their education programmes.

A coordinator from the Australian Curriculum WA gave an overview about the Australian Curriculum. There is a strong emphasis on Australian history from Year 1 to Year 6. I will be able to implement the Historical Skills, Historical knowledge and Understandings to ensure that excursions and other school programmes I develop make links to and integrate the Curriculum.

School Holiday Programme.

During the October school holidays children can make and fly a kite at the Mandurah Community Museum. See the advertisement for more information.
Katrina Pritchard.



KITE MAKING

October School Holidays

Mandurah Community Museum

Tuesday 4, Wednesday 5, Thursday 6

Tuesday 11, Wednesday 12, Thursday 13

10.30-11.30am
(suitable for children aged 5-12)

Kids will get to make and fly their own kite.

Bookings Essential Phone: 95503682



**Parents to
accompany
children
during activity**



Chairperson's Report.

Patron Announced.

At our July meeting The Friends of the Mandurah Community Museum voted to ask Mary King to be our Inaugural Patron. I am pleased to say, she has accepted this position.



When Mary first came to Mandurah she was a Librarian. Since then Mary has been involved in a lot of community work, she is very active in several organisations and is a busy lady. Mary has been a member of The Friends and a volunteer at the Museum for many years.

We will produce a 2012 calendar for sale. Several subjects have been suggested, a decision will be made about this at the next meeting.

We are eligible to apply for a City of Mandurah Grant in the next quarter. If you have any suggestions for this please let me know. The AGM will be held on 13th September, I would be pleased to see more of our members present.
Cherry Burton.

Search the Web. We have mentioned before about National Library of Australia's Website **TROVE**. Preparing this newsletter which includes extensive research on the Wearne family I have found **TROVE** invaluable. In this search engine are included lists, documents, passenger lists and importantly newspaper articles which are all catalogued and very responsive to searching.

The main problem with this site is knowing when to stop, one item leads to another and finally your search takes you into areas you weren't even going to look at. I recently spent hours reviewing articles and advertisements only because they had Mandurah in their subject.

Be patient with the newspaper articles, preparation of these involved a recognition program which converted from viewed written pieces to word documents. This means they interpret various blemishes on the old papers as letters.

If you have time, correct your searched document and save it, this is one way you can thank the National Library of Australia.
Jan Baker.

**Mandurah Community Museum,
3 Pinjarra Rd,
MANDURAH WA 6210.**

**Telephone 9550 3680.
Email. museum@mandurah.wa.gov.au
Internet. www.mandurahcommunitymuseum.org**

**Opening hours.
Tuesday to Friday. 10 am to 4pm.
Saturday & Sunday. 11 am to 3pm.
Closed Mondays and Public Holidays.**

**Friends of Mandurah Community Museum,
3 Pinjarra Rd,
MANDURAH WA 6210**

Meetings are second Tuesday of the month at 11 am.

The mission of the Friends is to provide assistance and support to the Museum in all its endeavours. The 'Friends' also seek to promote the heritage and history of Mandurah, and to assist other like minded bodies.

Membership of the Friends is by a yearly membership fee of \$10 due each August.